

ROAD INDEX

A	AQUILLA BLVD. C3	I cont	S	SPENCER ST. B3-84
	AQUILLA RD. A1-56	J		STILLWELL RD. F3-63
	ALLENSHIRE DR. C4			STONE SPRINGS DR. C4
B	BERKSHIRE DR. B3	K	J	TAYLORWELLS RD. C1-06
		K		TURNER DR. B3
				F4-61
C	CHARDON WINDSOR RD. D1-62	L	U	
	CLARIDON TROY RD. D1-06			LORING AVE. B3
	CORNELIA DR. B3			
	CLARIDON PARK DR. D-2			
D	DURKEE RD. F4-54	M	V	
				MAYFIELD RD. A4-64
				MEADOWWOOD DR. B4
				MERRITT RD. A6
E	ENSIGN RD. D5-95	N	W	
F	FOREST RD. E4-64	O	X	
				OLD STATE RD. E1-66
G	GOREDON DR. B3	P	Y	
H	HALL RD. C2-03	Q	Z	
I		R		

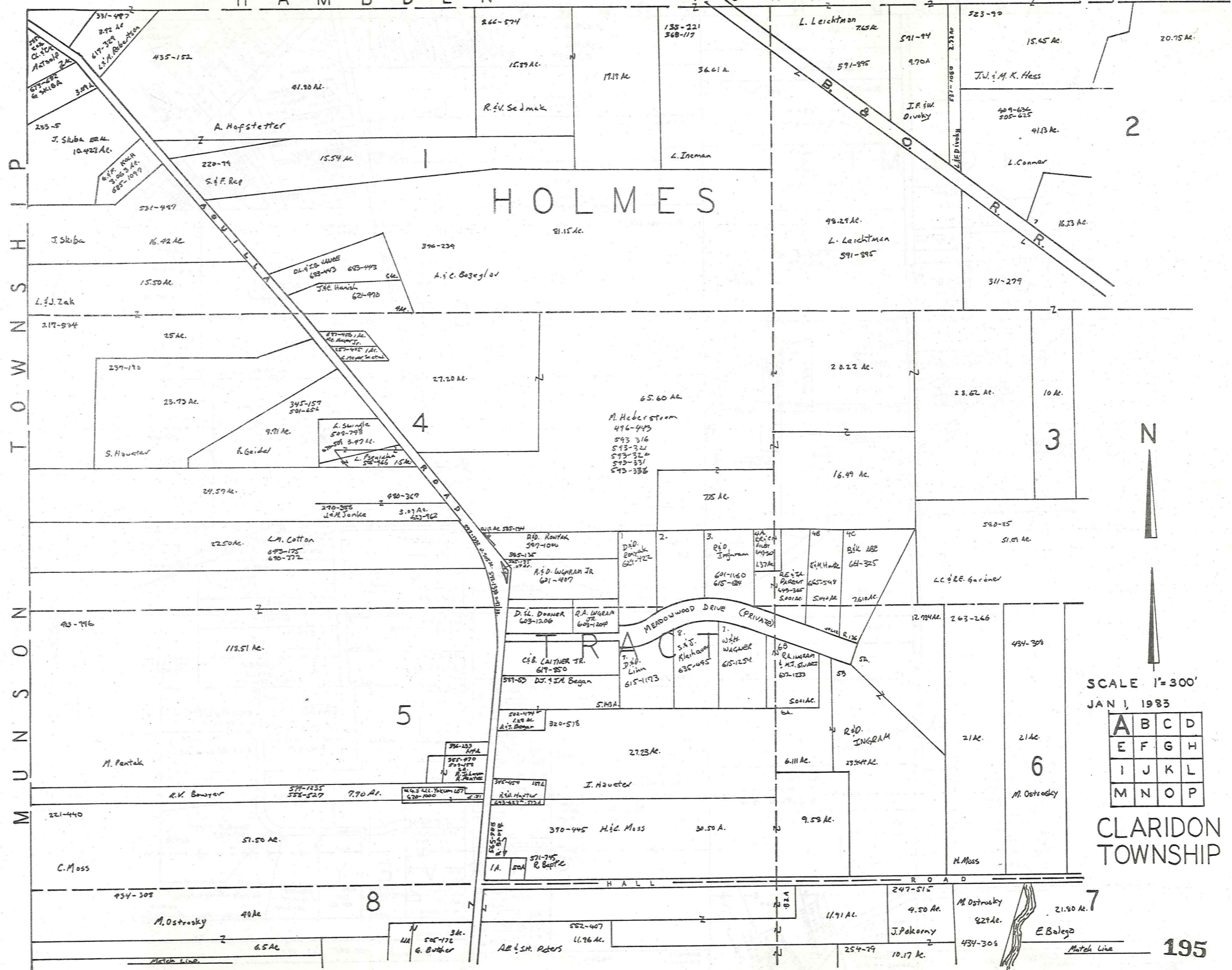
- 1 CLARIDON LOCAL SCHOOL
- 2 EAST CLARIDON METHODIST CHURCH
- 3 THE FIRST CONGREGATIONAL CHURCH
- 4 CHRISTIAN MISSIONARY ALLIANCE CH.
- 5 CLARIDON CENTER CEMETERY
- 6 EAST CLARIDON CEMETERY
- 7 WEST CLARIDON CEMETERY
- 8 CEMETERY
- 9 PLEASANT HILL COUNTY HOME
- 10 GEauga COUNTY COMM. HOSPITAL
- 11 CLARIDON TOWN HALL
- 12 U.S. POST OFFICE (CLARIDON)
- 13 GEauga COUNTY SAFETY CENTER
- 14 GEauga COUNTY WELFARE DEPT.

CLARIDON TOWNSHIP

SCALE: 1"=2000'

UNPAVED ROAD
PAVED ROAD
RAILROAD
TOWNSHIP LINE

H A M B D E N T O W N S H I P



P
I
S
H
T
O
W
N
S
H
I
P
M
U
N
I
C
I
P
A
L

H O L M E S

2

3

4

5

6

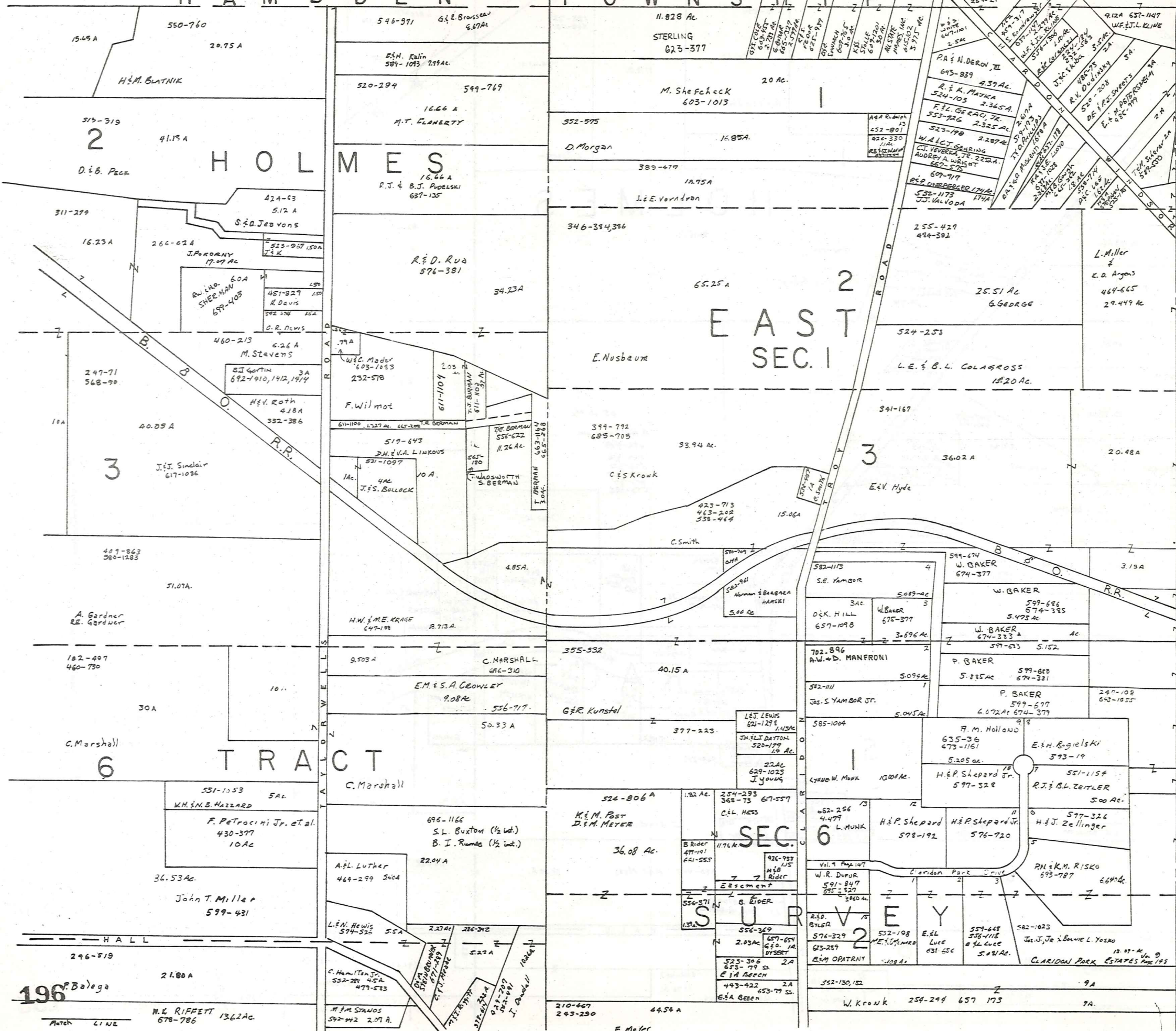
8

SCALE 1"=300'
JAN 1, 1983

A	B	C	D
E	F	G	H
I	J	K	L
M	N	O	P

CLARIDON TOWNSHIP

H A M B D E N T O W N S H I P

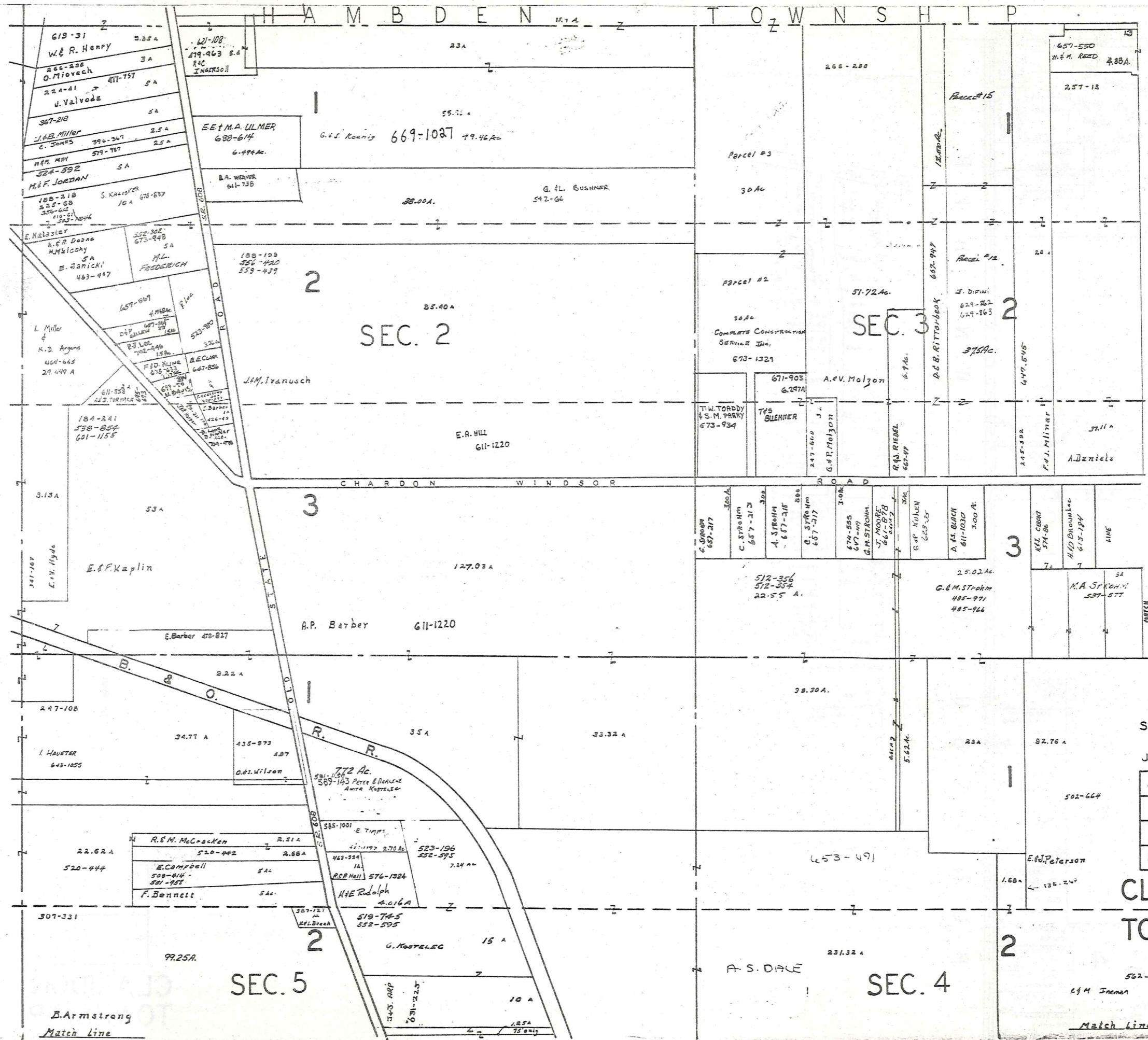


SCALE 1"=300'
JAN 1, 1983

A	B	C	D
E	F	G	H
I	J	K	L
M	N	O	P

CLARIDON TOWNSHIP

196 Bologo
M.W. RIFFETT 136.2 AC.
578-786



SCALE 1" = 300'

JAN 1, 1983

A	B	C	D
E	F	G	H
I	J	K	L
M	N	O	P

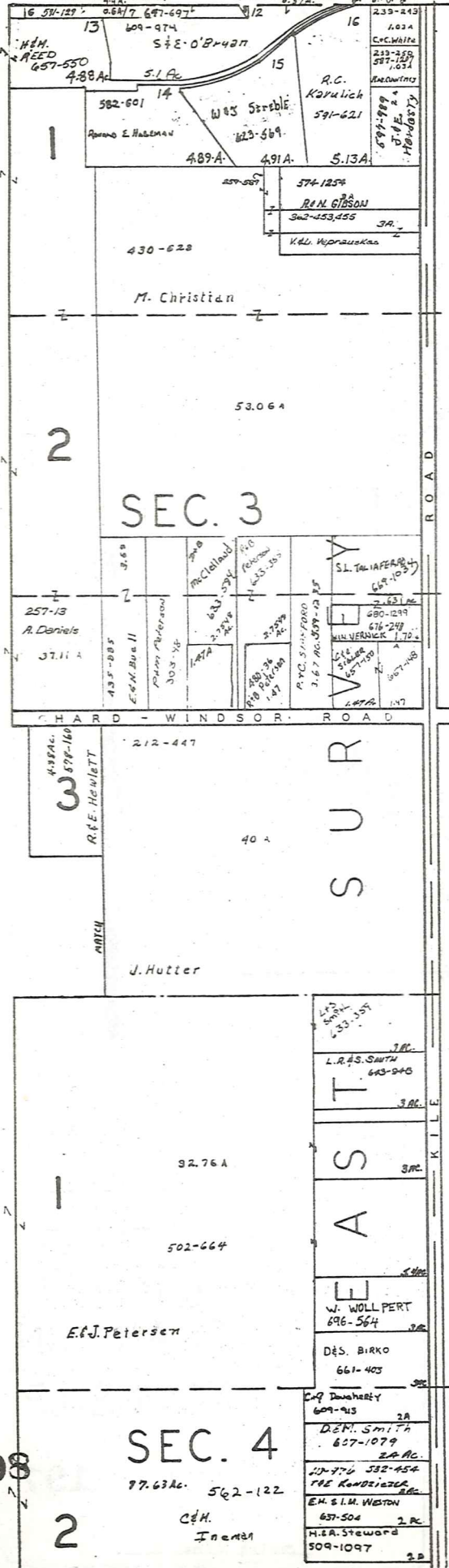
CLARIDON
TOWNSHIP

197

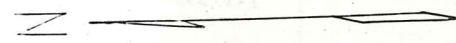
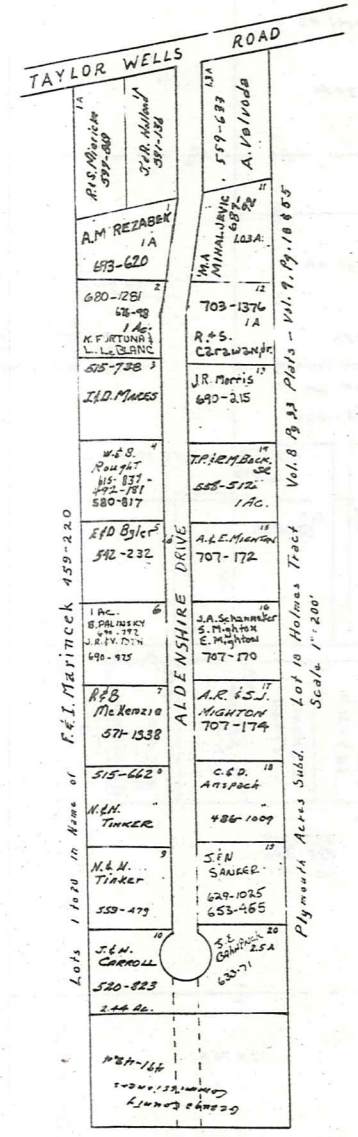
B. Armstrong
Match Line

Match Line

HAMBLEN TOWNSHIP



TOWNSHIP



SCALE 1"=300'

JAN 1, 1983

A	B	C	D
E	F	G	H
I	J	K	L
M	N	O	P

CLARIDON TOWNSHIP

198

2

SEC. 4

97.63 Ac. 5q2-122

C.H. Friend

92.76 A

502-664

E.F.J. Petersen

J. WOLLPERT
696-564

D.S. BIRKO
661-403

C. J. DUNN
609-915

D.E.M. SMITH
627-1079

JUN 776 532-454
F.R.E. KAMBERGER

E.M. S.L.M. WESTON
637-504

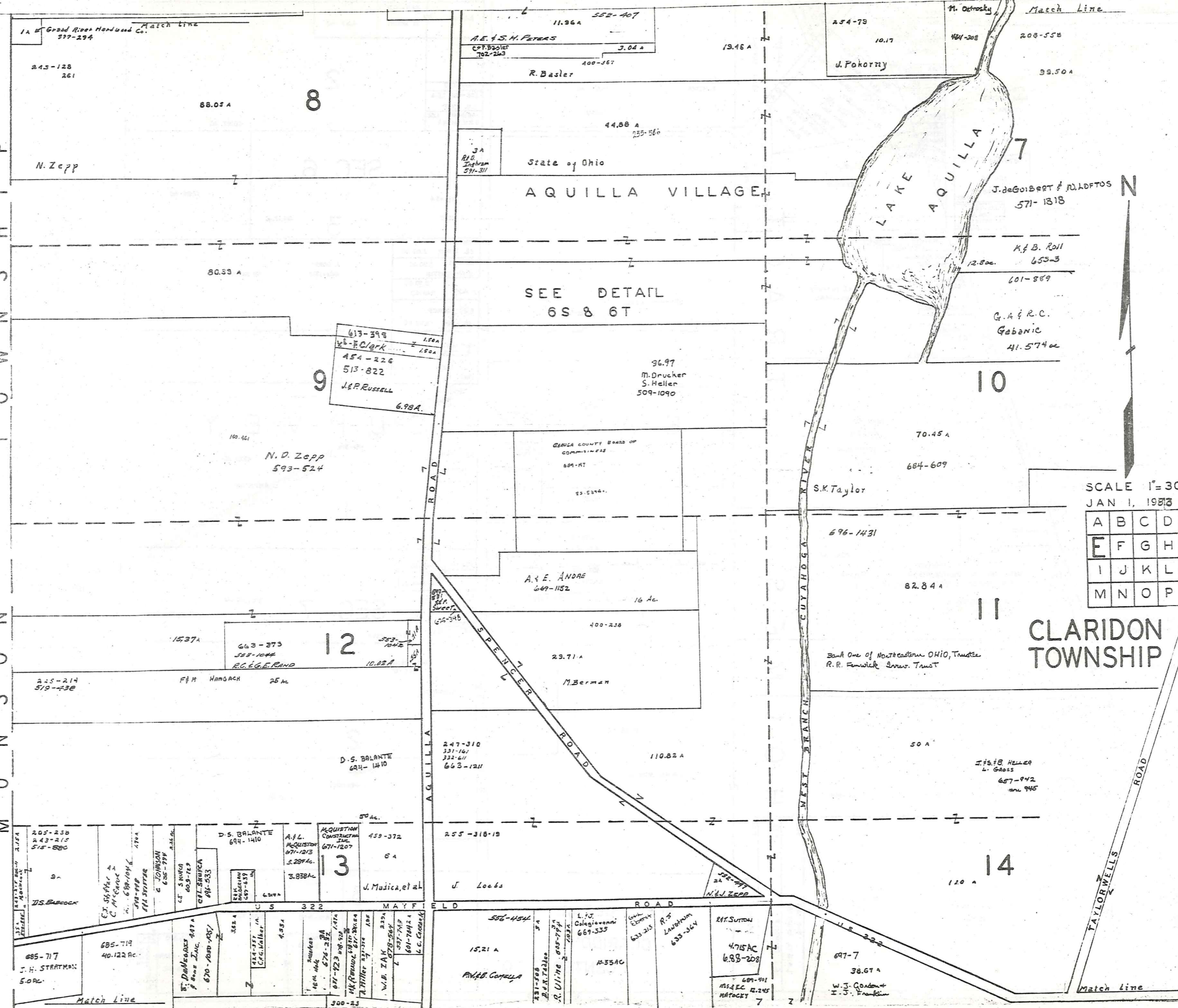
H.E.A. STEWARD
509-1097

Lots 1 to 12 in Name of F.E.I. MARITICK 459-220

Vol. 8 B 33 Plots - Vol. 9, 10, 11 B 805
Plymouth Acres Subd. Scale 1"=200'

T
O
W
N
S
H
I
P

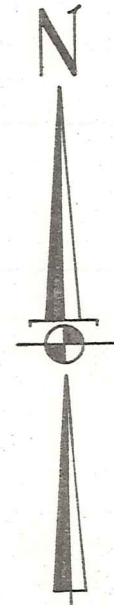
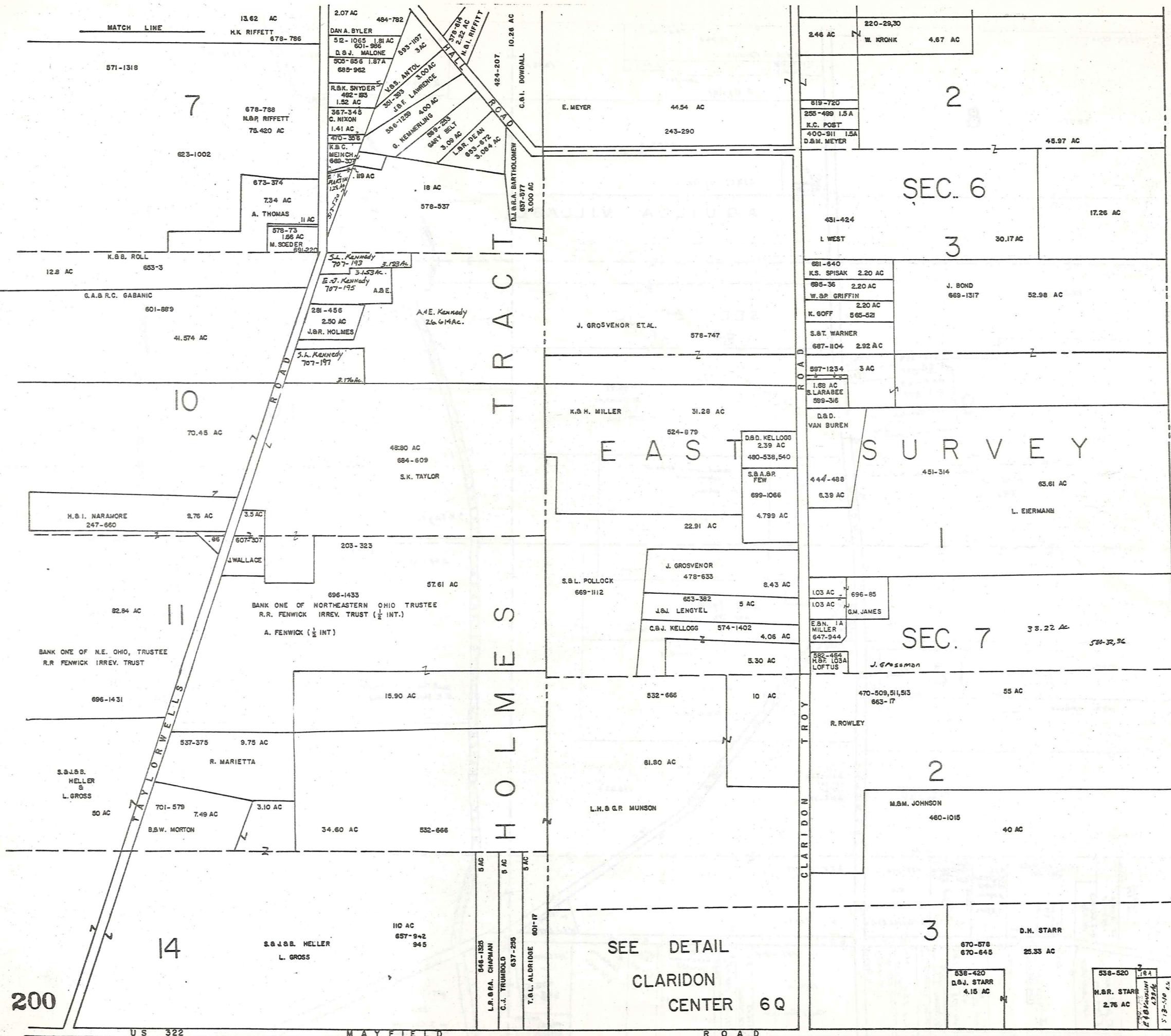
M
U
N
I
C
I
P
A
L



SCALE 1" = 300'
JAN 1, 1983

A	B	C	D
E	F	G	H
I	J	K	L
M	N	O	P

CLARIDON
TOWNSHIP



SCALE: 1" = 300'
 JAN. 1, 1983

A	B	C	D
E	F	G	H
I	J	K	L
M	N	O	P

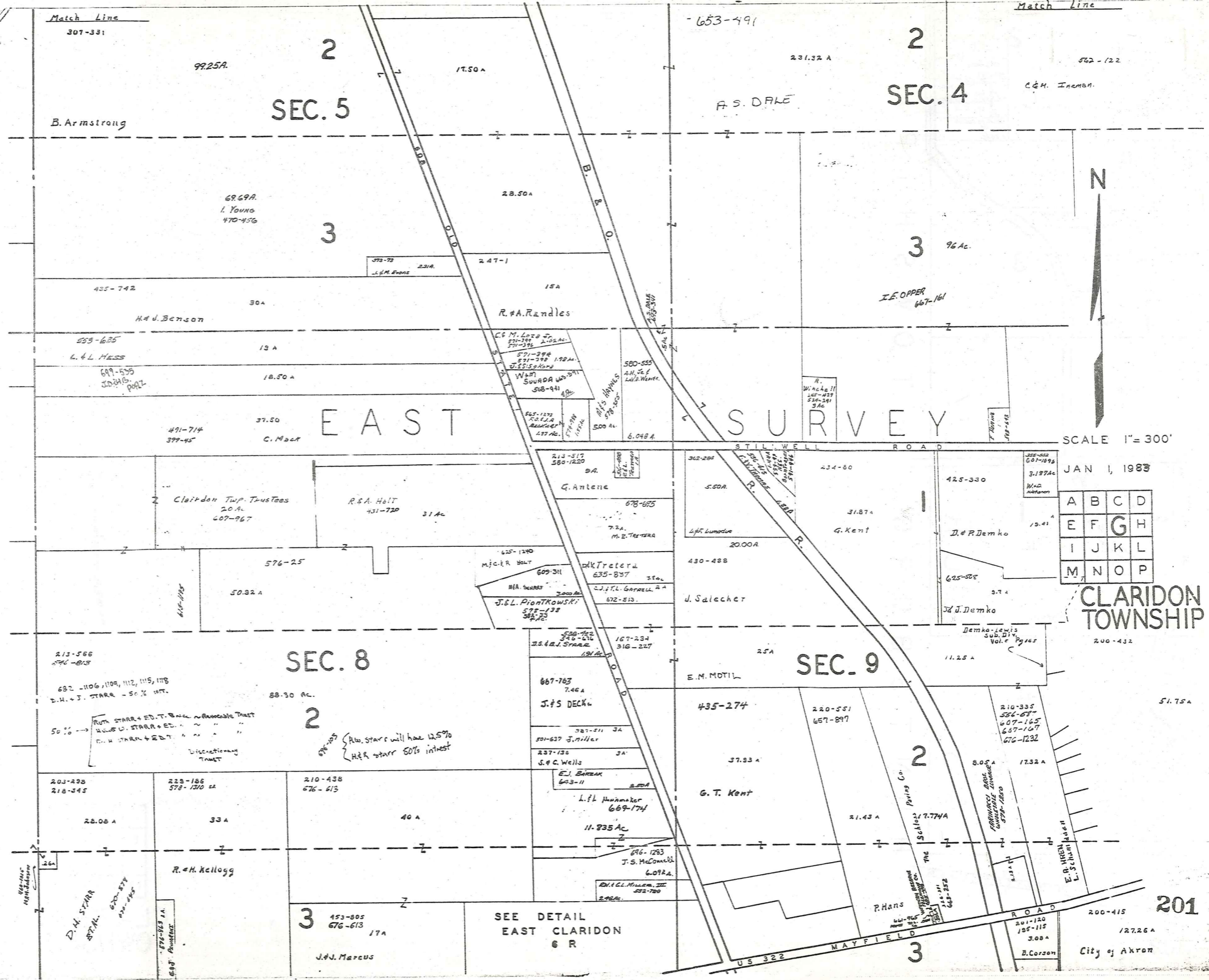
CLARIDON TOWNSHIP

200

US 322

MAYFIELD

ROAD



Match Line

Match Line

653-491

2
SEC. 5

2
SEC. 4

3

3

EAST

SURVEY

N

SCALE 1" = 300'

JAN 1, 1983

A	B	C	D
E	F	G	H
I	J	K	L
M	N	O	P

CLARIDON TOWNSHIP

SEC. 8

SEC. 9

2

2

3

3

SEE DETAIL EAST CLARIDON 6 R

201

City of Akron

B. Armstrong

A.S. DALE

C.H. Ineman

68.69A
L. YOUNG
470-456

28.50A

96Ac.

I.E. OPPER
667-161

R.A. Randles

H.A. Benson

L. & L. HESS

13A

18.50A

C. Malt

EAST

SURVEY

SCALE 1" = 300'

JAN 1, 1983

A	B	C	D
E	F	G	H
I	J	K	L
M	N	O	P

CLARIDON TOWNSHIP

SEC. 8

SEC. 9

2

2

3

3

SEE DETAIL EAST CLARIDON 6 R

201

City of Akron

B. Armstrong

A.S. DALE

C.H. Ineman

68.69A
L. YOUNG
470-456

28.50A

96Ac.

I.E. OPPER
667-161

R.A. Randles

H.A. Benson

L. & L. HESS

13A

18.50A

C. Malt

EAST

SURVEY

SCALE 1" = 300'

JAN 1, 1983

A	B	C	D
E	F	G	H
I	J	K	L
M	N	O	P

CLARIDON TOWNSHIP

SEC. 8

SEC. 9

2

2

3

3

SEE DETAIL EAST CLARIDON 6 R

201

City of Akron

B. Armstrong

A.S. DALE

C.H. Ineman

68.69A
L. YOUNG
470-456

28.50A

96Ac.

I.E. OPPER
667-161

R.A. Randles

H.A. Benson

L. & L. HESS

13A

18.50A

C. Malt

EAST

SURVEY

SCALE 1" = 300'

JAN 1, 1983

A	B	C	D
E	F	G	H
I	J	K	L
M	N	O	P

CLARIDON TOWNSHIP

SEC. 8

SEC. 9

2

2

3

3

SEE DETAIL EAST CLARIDON 6 R

201

City of Akron

B. Armstrong

A.S. DALE

C.H. Ineman

68.69A
L. YOUNG
470-456

28.50A

96Ac.

I.E. OPPER
667-161

R.A. Randles

H.A. Benson

L. & L. HESS

13A

18.50A

C. Malt

EAST

SURVEY

SCALE 1" = 300'

JAN 1, 1983

A	B	C	D
E	F	G	H
I	J	K	L
M	N	O	P

CLARIDON TOWNSHIP

SEC. 8

SEC. 9

2

2

3

3

SEE DETAIL EAST CLARIDON 6 R

201

City of Akron

B. Armstrong

A.S. DALE

C.H. Ineman

68.69A
L. YOUNG
470-456

28.50A

96Ac.

I.E. OPPER
667-161

R.A. Randles

H.A. Benson

L. & L. HESS

13A

18.50A

C. Malt

EAST

SURVEY

SCALE 1" = 300'

JAN 1, 1983

A	B	C	D
E	F	G	H
I	J	K	L
M	N	O	P

CLARIDON TOWNSHIP

SEC. 8

SEC. 9

2

2

3

3

SEE DETAIL EAST CLARIDON 6 R

201

City of Akron

B. Armstrong

A.S. DALE

C.H. Ineman

68.69A
L. YOUNG
470-456

28.50A

96Ac.

I.E. OPPER
667-161

R.A. Randles

H.A. Benson

L. & L. HESS

13A

18.50A

C. Malt

EAST

SURVEY

SCALE 1" = 300'

JAN 1, 1983

A	B	C	D
E	F	G	H
I	J	K	L
M	N	O	P

CLARIDON TOWNSHIP

SEC. 8

SEC. 9

2

2

3

3

SEE DETAIL EAST CLARIDON 6 R

201

City of Akron

B. Armstrong

A.S. DALE

C.H. Ineman

68.69A
L. YOUNG
470-456

28.50A

96Ac.

I.E. OPPER
667-161

R.A. Randles

H.A. Benson

L. & L. HESS

13A

18.50A

C. Malt

EAST

SURVEY

SCALE 1" = 300'

JAN 1, 1983

A	B	C	D
E	F	G	H
I	J	K	L
M	N	O	P

CLARIDON TOWNSHIP

SEC. 8

SEC. 9

2

2

3

3

SEE DETAIL EAST CLARIDON 6 R

201

City of Akron

B. Armstrong

A.S. DALE

C.H. Ineman

68.69A
L. YOUNG
470-456

28.50A

96Ac.

I.E. OPPER
667-161

R.A. Randles

H.A. Benson

L. & L. HESS

13A

18.50A

C. Malt

EAST

SURVEY

SCALE 1" = 300'

JAN 1, 1983

A	B	C	D
E	F	G	H
I	J	K	L
M	N	O	P

CLARIDON TOWNSHIP

SEC. 8

SEC. 9

2

2

3

3

SEE DETAIL EAST CLARIDON 6 R

201

City of Akron

B. Armstrong

A.S. DALE

C.H. Ineman

68.69A
L. YOUNG
470-456

28.50A

96Ac.

I.E. OPPER
667-161

R.A. Randles

H.A. Benson

L. & L. HESS

13A

18.50A

C. Malt

EAST

SURVEY

SCALE 1" = 300'

JAN 1, 1983

Match Line

SEC. 4

503-246 20Ac.
 T.J. & K.E. PESCHA
 653-465
 J. LIOTTA 2.0Ac.
 F. & J. HENRY
 509-889 2.0Ac.
 J. & M. HESS 2.0Ac.
 S15-908
 S. & V.J. RBAFFI
 537-1250
 2.0Ac.
 M. & V. MEADOWS
 643-98
 2.26 Ac.

77. Ac.
C. & M. Inman

200-101
509-615
16.72 A

A. Wolf
R. Posto

550-158

H.B. & I.M. CHAPMAN
6.397 A

3

452-733

546-29

4.00 Ac.
7.388 A

R. Kelsey, Jr

661-289
5 A

O.B. WARNER

20.60 A

672-1011

H. Esser

STILLWELL ROAD

496-328
9 A

G. EC. KARCH JR.

201-31

50 A

City of Akron

2

51.75 A

SEC. 9

City of Akron

202-467
2.04 A
238-478
2.0 A
160-513
1.62 A
619-1162
1.62 A
199-456
1.58 A
585-372
1.82 A
435-4
1.80 A
603-518
1.80 A
R. BARTUNEK
225-316
232-516

200-415
127.26 A

3

127.26 A

202 City of Akron

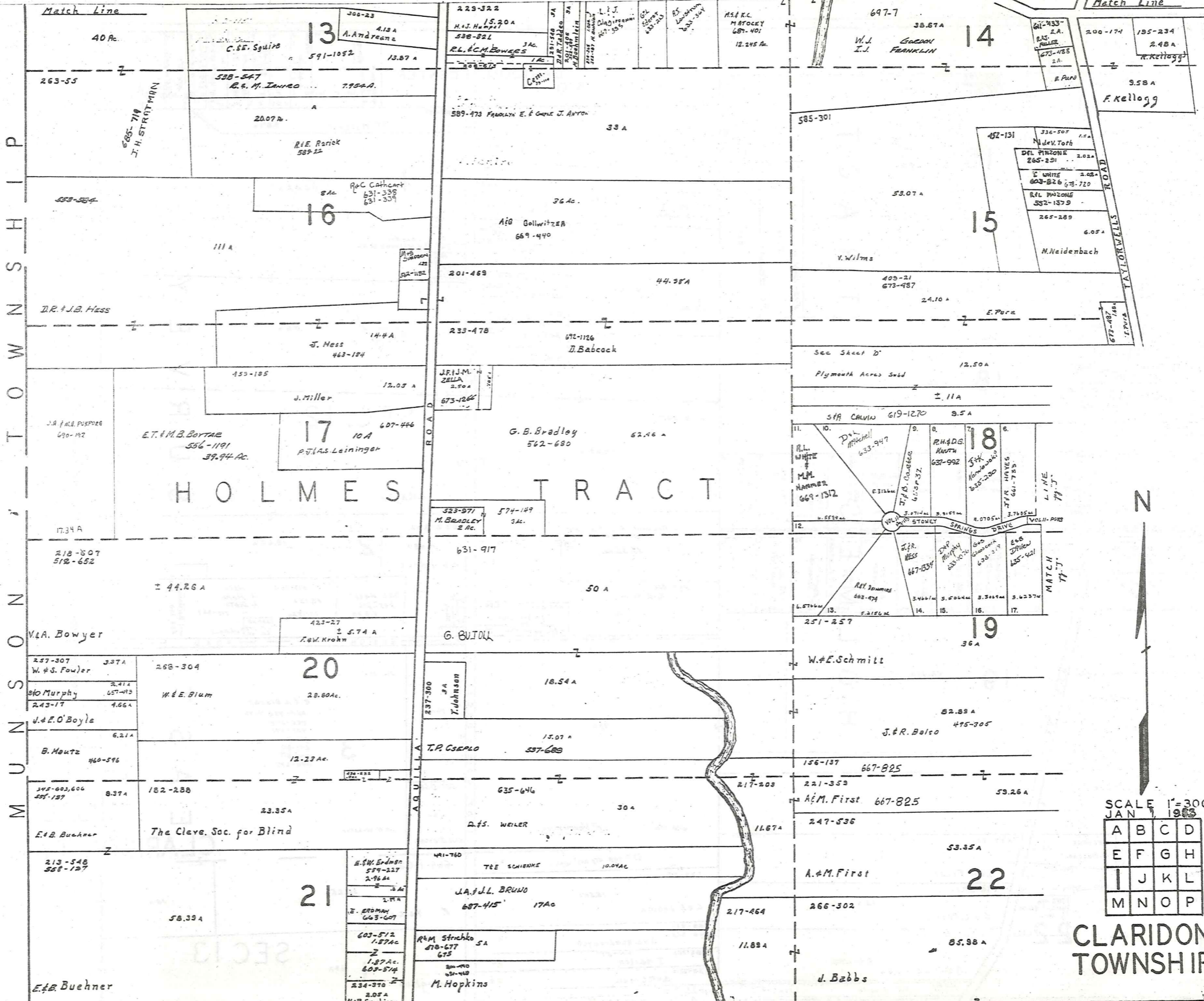
EAST SURVEY TOWNSHIP HUNTSBURG



SCALE 1" = 300'
JAN 1, 1983

A	B	C	D
E	F	G	H
I	J	K	L
M	N	O	P

CLARIDON TOWNSHIP

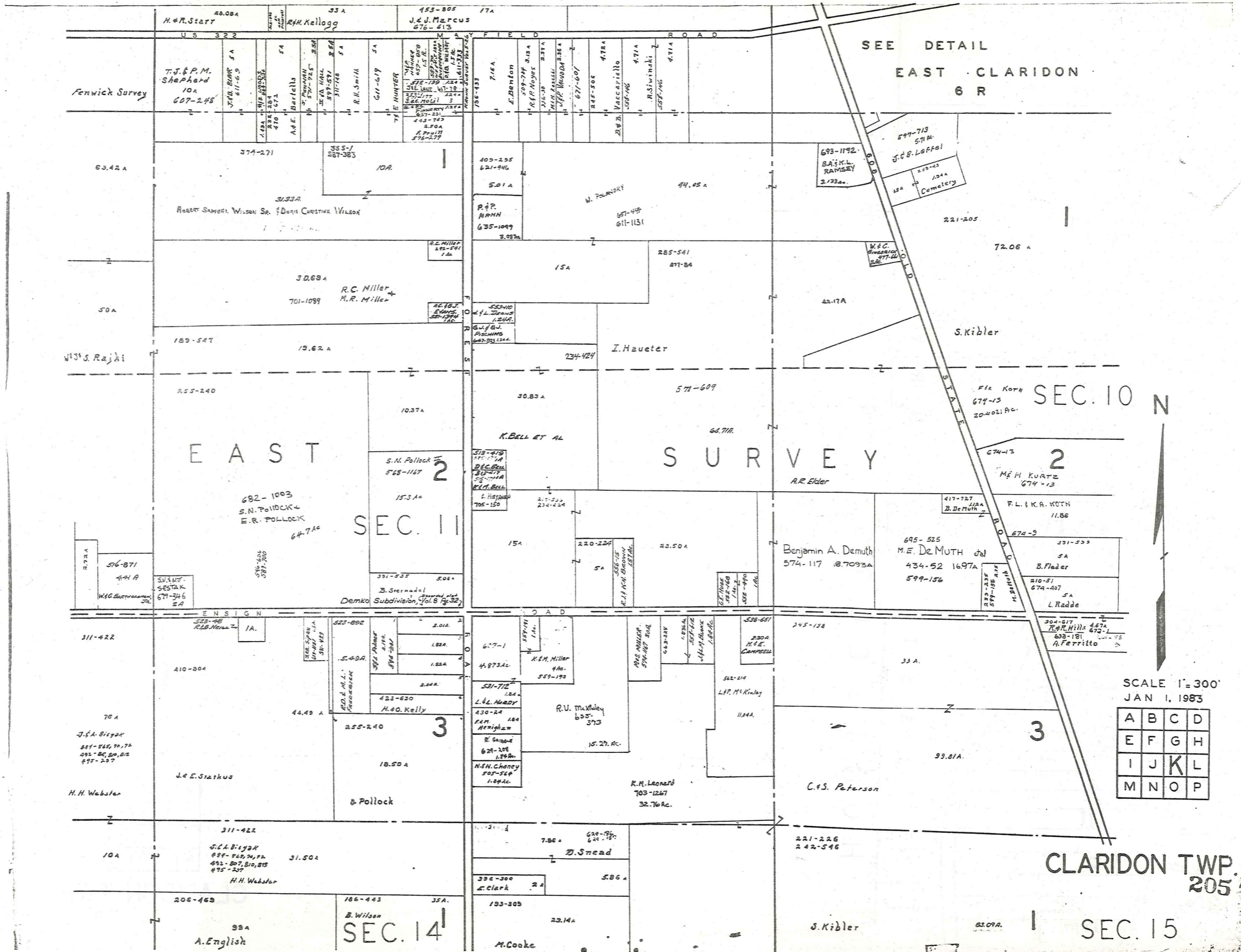


SCALE 1"=300'

JAN 1 1903

A	B	C	D
E	F	G	H
I	J	K	L
M	N	O	P

CLARIDON TOWNSHIP 203



SEE DETAIL
EAST CLARIDON
6 R

SEC. 10

EAST

SURVEY

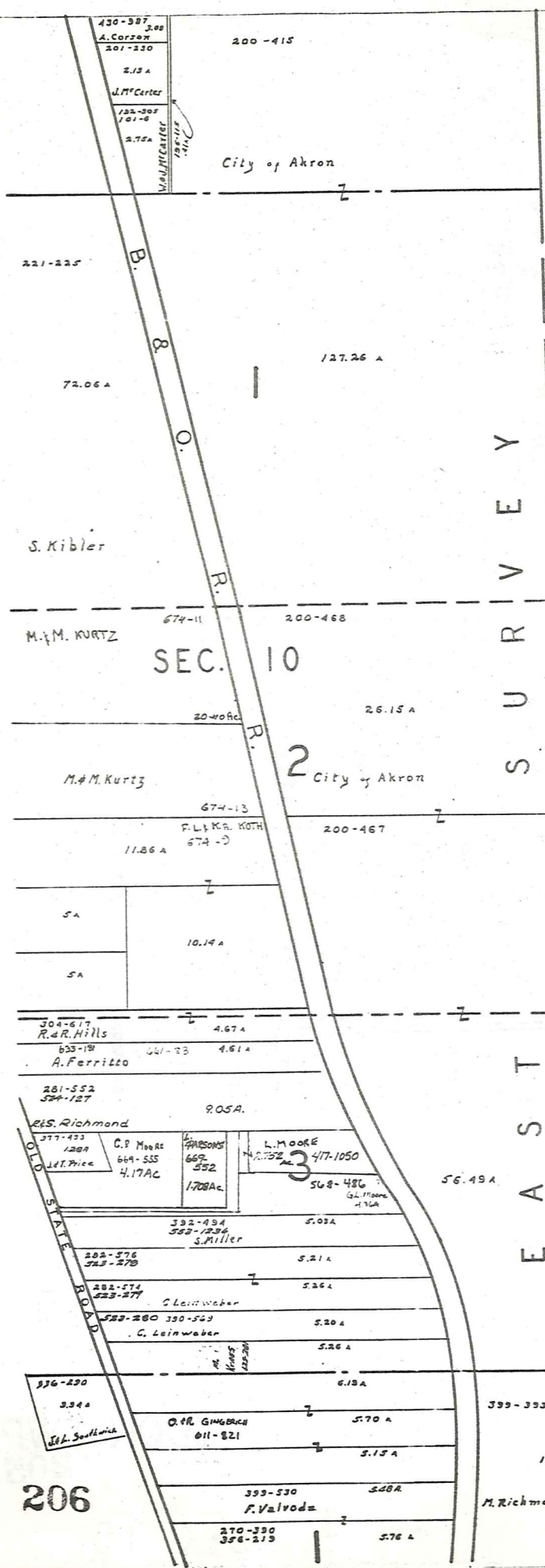
SEC. 11

CLARIDON TWP.
205

SEC. 15

SCALE 1"=300'
JAN 1, 1983

A	B	C	D
E	F	G	H
I	J	K	L
M	N	O	P



S U R V E Y
 T O W N S H I P
 H U N T S B U R G
 E A S T

SEC. 10

2

3

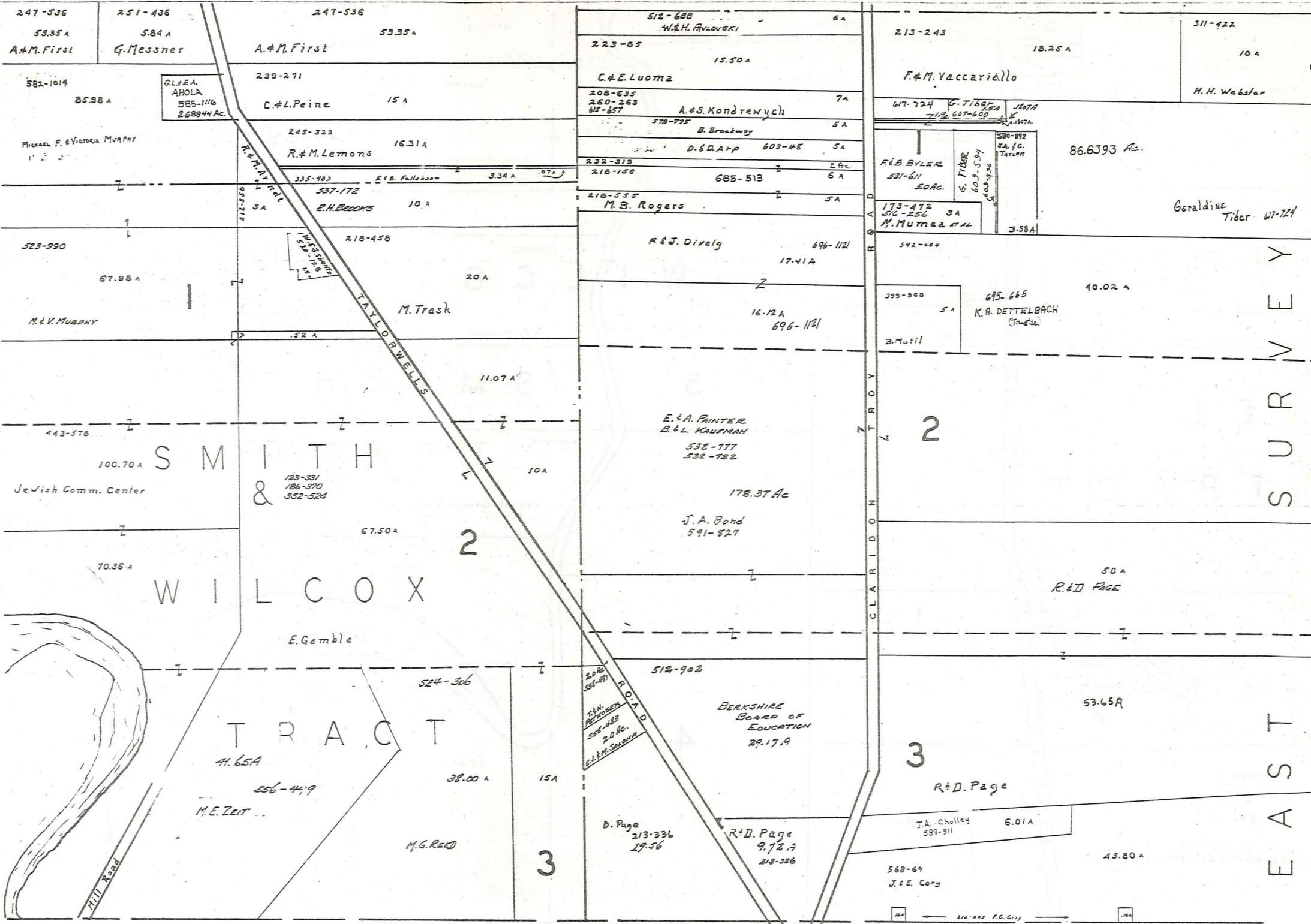


SCALE 1" = 300'
 JAN 1, 1983

A	B	C	D
E	F	G	H
I	J	K	L
M	N	O	P

CLARIDON TWP.

206



CLARIDON TOWNSHIP

EAST

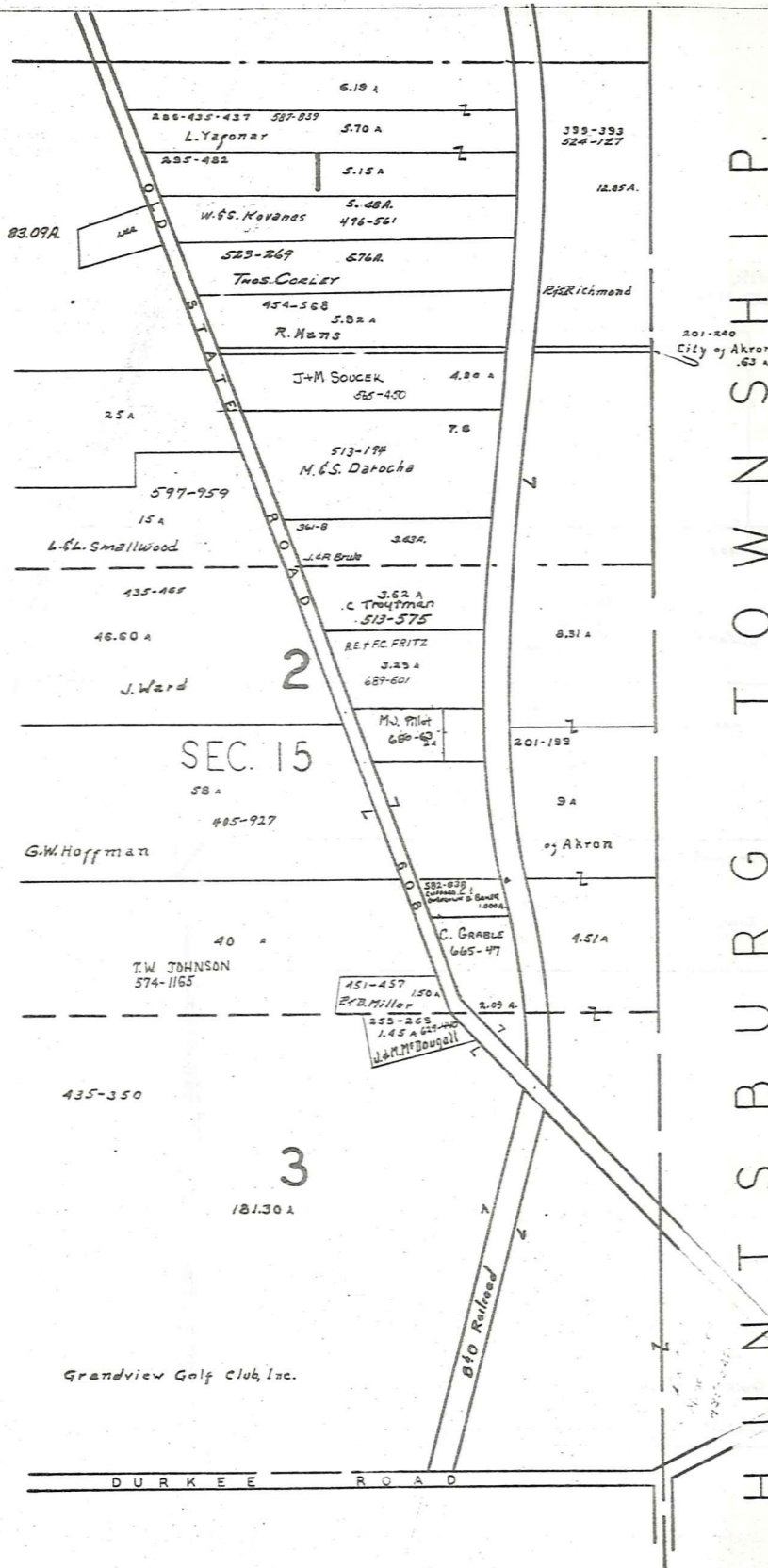
SURVEY

SCALE 1" = 300'
JAN 1, 1983

BURTON TOWNSHIP

A	B	C	D
E	F	G	H
I	J	K	L
M	N	O	P

CLARIDON TWP.



H U N T S B U R G T O W N S H I P

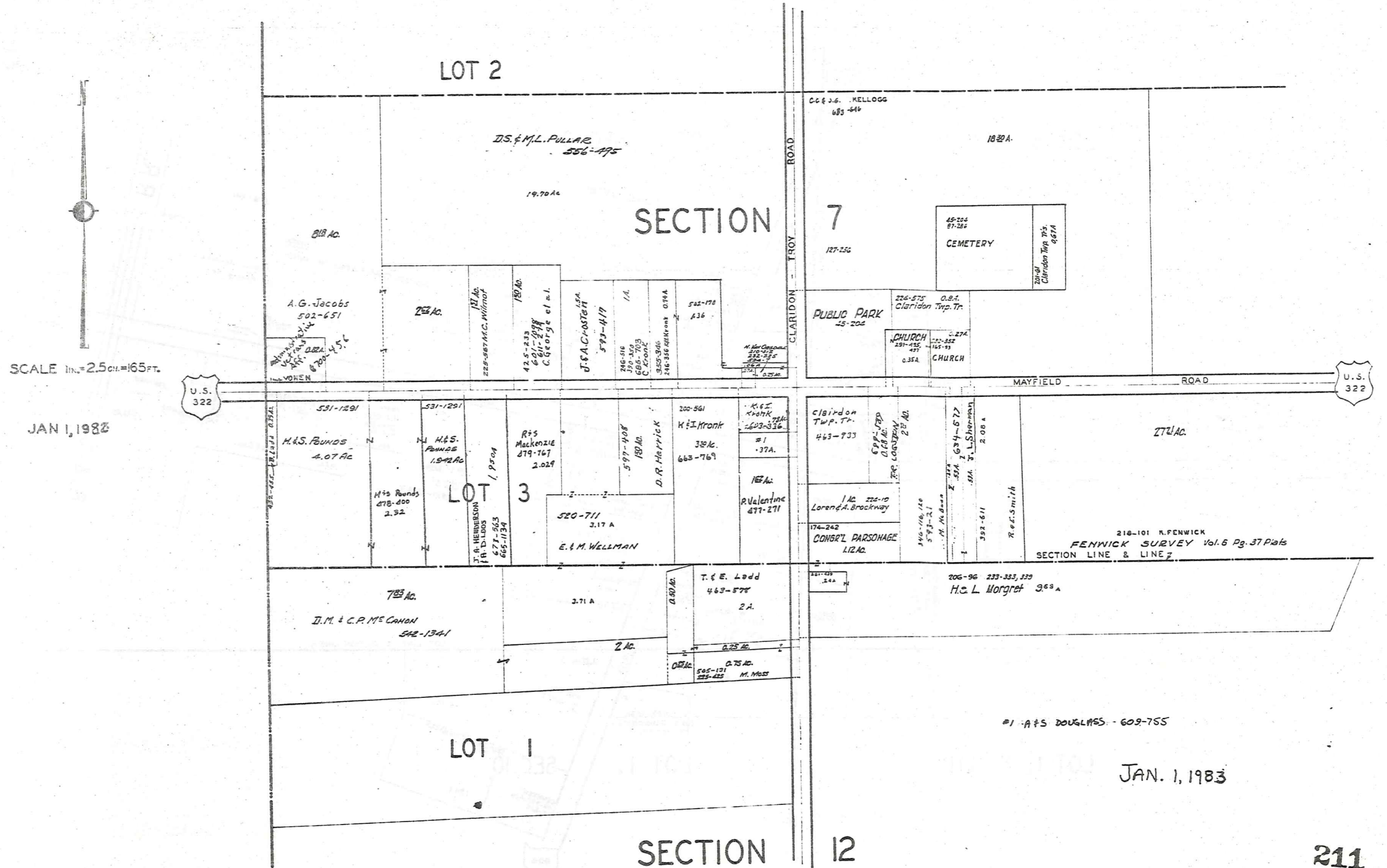
BURTON TWP.



SCALE 1" = 300'
JAN 1, 1983

A	B	C	D
E	F	G	H
I	J	K	L
M	N	O	P

CLARIDON T.P. [CENTER]



EAST CLARIDON
AND VICINITY

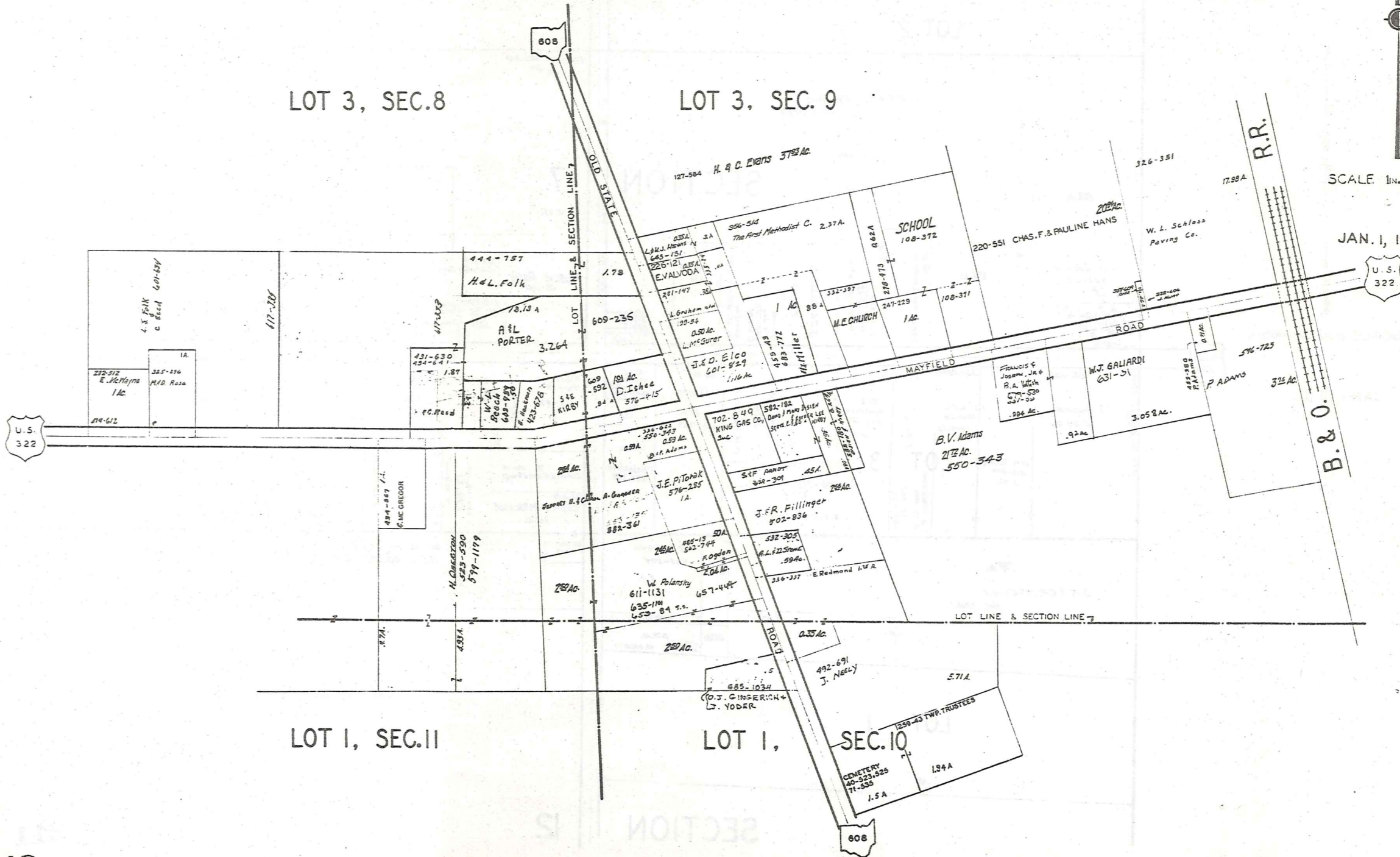
CLARIDON TP.

EAST CLARIDON
AND VICINITY



SCALE 1in.=25ch.=165'

JAN. 1, 1983

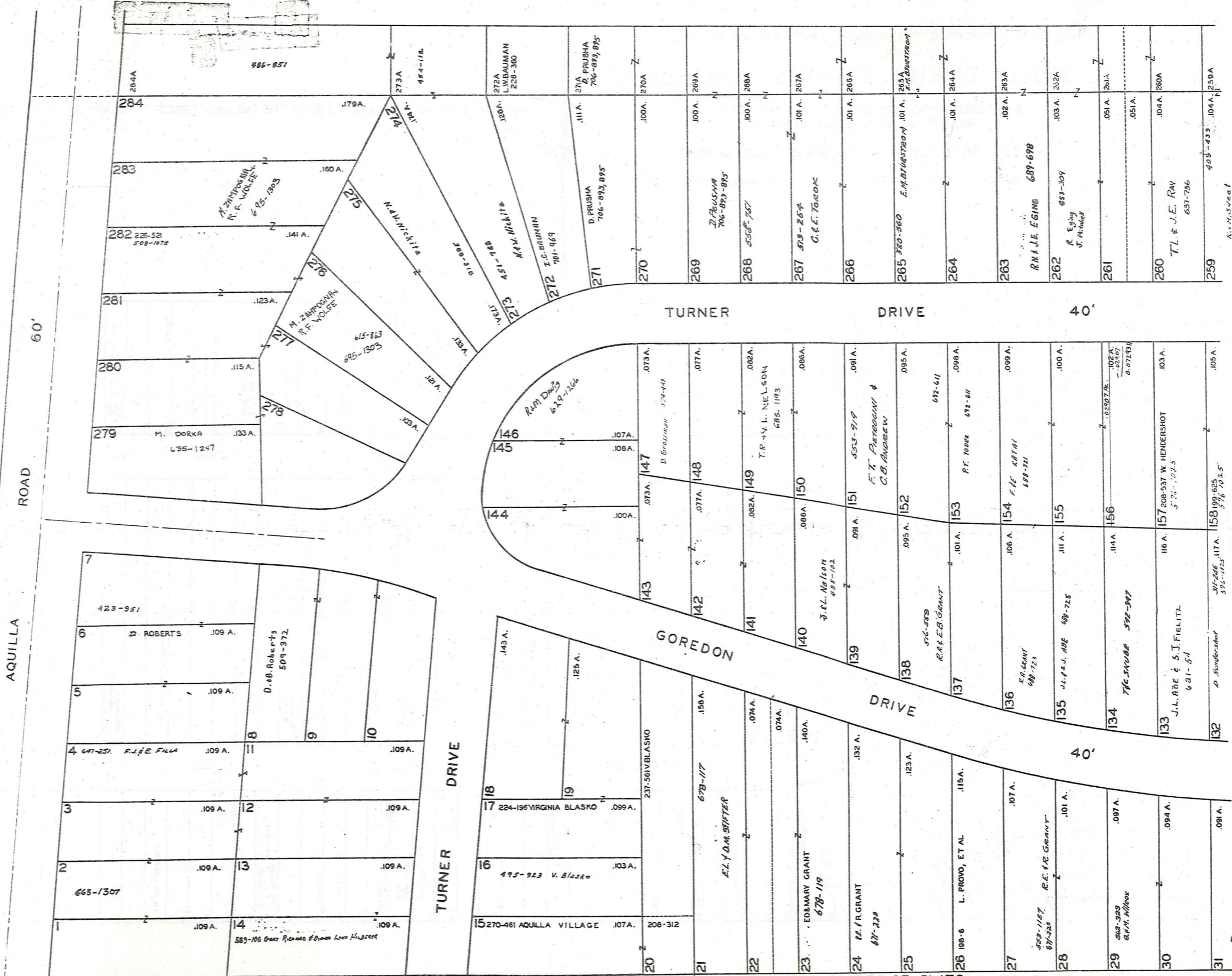


SCALE 1"=30 FT.

SEE 6-S-CTR.

GOREDON DRIVE 40'		TURNER DRIVE 40'		AQUILLA BOULEVARD	
57	703-803 J. Pierce 110A .103A	108	303-701 101A 103A	207	.105A
58	503-718 E.E. Corbett 104A	107	496-99 104A	206	.092A
59	531-727 E.E. Corbett 103A	106	657-478 522-659 104A	205	.092A
60	179-381 J.B.A.L. CHAPARD 103A	105	307-350 104A	204	.115A
61	524-79 E.E. Corbett 103A	104	186 104A	203	.052A
62	524-642 103A	103	698-819 104A	202	.052A
63	G.A. Davis 103A	102	188 104A	201	.104A
64	484-743 103A	101	189 104A	200	.104A
65	165-462 J.J. ZEMMETAL 103A	100	410-59 104A	199	.104A
66	J.S. & J. TILLY 645-88 103A	99	358-489 104A	198	.104A
67	103A	98	224-284 SWARGO 104A	197	.104A
68	103A	97	193 104A	196	.104A
69	653-174 C.S. Gatti 103A	96	667-882 104A	195	.104A
70	R. AUST-SOU 635-686 102A	95	195 104A	194	.104A
71	102A	94	516-584 - 547-1400 104A	193	.104A
72	102A	93	573-144 104A	192	.104A
73	A. CAIN 427-632 102A	92	235-282 104A	191	.104A
74	A. CAIN 102A	91	199 104A	190	.104A
75	485-923 V. Baska 102A	90	642-857 104A	189	.104A
76	192-600 H.G. & H.M. HECKER 102A	89	201 104A	188	.104A
77	631-104 L. Shea & F.R. Baumgartner 102A	88	202 104A	187	.104A
78	54 Marys 102A	87	203 104A	186	.104A
79	102A	86	204 104A	185	.104A
80	D.A. LOFTUS .092A	85	85 .092A	184	.104A
81	.092A	84	233-249 L. ZINNER .092A	183	.104A
82	.103A	83	83 .115A	182	.104A
		82	82 .103A	181	.104A
		81	81 .092A	180	.104A
		80	80 .092A	179	.104A
		79	79 .102A	178	.104A
		78	78 .102A	177	.104A
		77	77 .102A	176	.104A
		76	76 .102A	175	.104A
		75	75 .102A	174	.104A
		74	74 .102A	173	.104A
		73	73 .102A	172	.104A
		72	72 .102A	171	.104A
		71	71 .102A	170	.104A
		70	70 .102A	169	.104A
		69	69 .102A	168	.104A
		68	68 .102A	167	.104A
		67	67 .102A	166	.104A
		66	66 .102A	165	.104A
		65	65 .102A	164	.104A
		64	64 .102A	163	.104A
		63	63 .102A	162	.104A
		62	62 .102A	161	.104A
		61	61 .102A	160	.104A
		60	60 .102A	159	.104A
		59	59 .102A	158	.104A
		58	58 .102A	157	.104A
		57	57 .102A	156	.104A
		56	56 .102A	155	.104A
		55	55 .102A	154	.104A
		54	54 .102A	153	.104A
		53	53 .102A	152	.104A
		52	52 .102A	151	.104A
		51	51 .102A	150	.104A
		50	50 .102A	149	.104A
		49	49 .102A	148	.104A
		48	48 .102A	147	.104A
		47	47 .102A	146	.104A
		46	46 .102A	145	.104A
		45	45 .102A	144	.104A
		44	44 .102A	143	.104A
		43	43 .102A	142	.104A
		42	42 .102A	141	.104A
		41	41 .102A	140	.104A
		40	40 .102A	139	.104A
		39	39 .102A	138	.104A
		38	38 .102A	137	.104A
		37	37 .102A	136	.104A
		36	36 .102A	135	.104A
		35	35 .102A	134	.104A
		34	34 .102A	133	.104A
		33	33 .102A	132	.104A
		32	32 .102A	131	.104A
		31	31 .102A	130	.104A
		30	30 .102A	129	.104A
		29	29 .102A	128	.104A
		28	28 .102A	127	.104A
		27	27 .102A	126	.104A
		26	26 .102A	125	.104A
		25	25 .102A	124	.104A
		24	24 .102A	123	.104A
		23	23 .102A	122	.104A
		22	22 .102A	121	.104A
		21	21 .102A	120	.104A
		20	20 .102A	119	.104A
		19	19 .102A	118	.104A
		18	18 .102A	117	.104A
		17	17 .102A	116	.104A
		16	16 .102A	115	.104A
		15	15 .102A	114	.104A
		14	14 .102A	113	.104A
		13	13 .102A	112	.104A
		12	12 .102A	111	.104A
		11	11 .102A	110	.104A
		10	10 .102A	109	.104A
		9	9 .102A	108	.104A
		8	8 .102A	107	.104A
		7	7 .102A	106	.104A
		6	6 .102A	105	.104A
		5	5 .102A	104	.104A
		4	4 .102A	103	.104A
		3	3 .102A	102	.104A
		2	2 .102A	101	.104A
		1	1 .102A	100	.104A

SCALE 1"=30 FT.



LAKE AQUILLA SUBDIVISION NO 1 & LAKE AQUILLA SUBDIVISION NO 1 ADDITION
 VOL 1 PGS 50 & 51 REC OF PLATS VOL 4 PGS 23 & 24 REC OF PLATS

LAKE AQUILLA VILLAGE VOL. 4 PAGES 26 - 27 REC. OF PLATS
 JAN. 1, 1983

215
 6-S WEST

AQUILLA VILLAGE VOL. 4, PAGES 26-27 REC. OF PLATS
 FORMERLY
 LAKE AQUILLA ESTATES COMPANY'S SUBDIVISION NO. 1

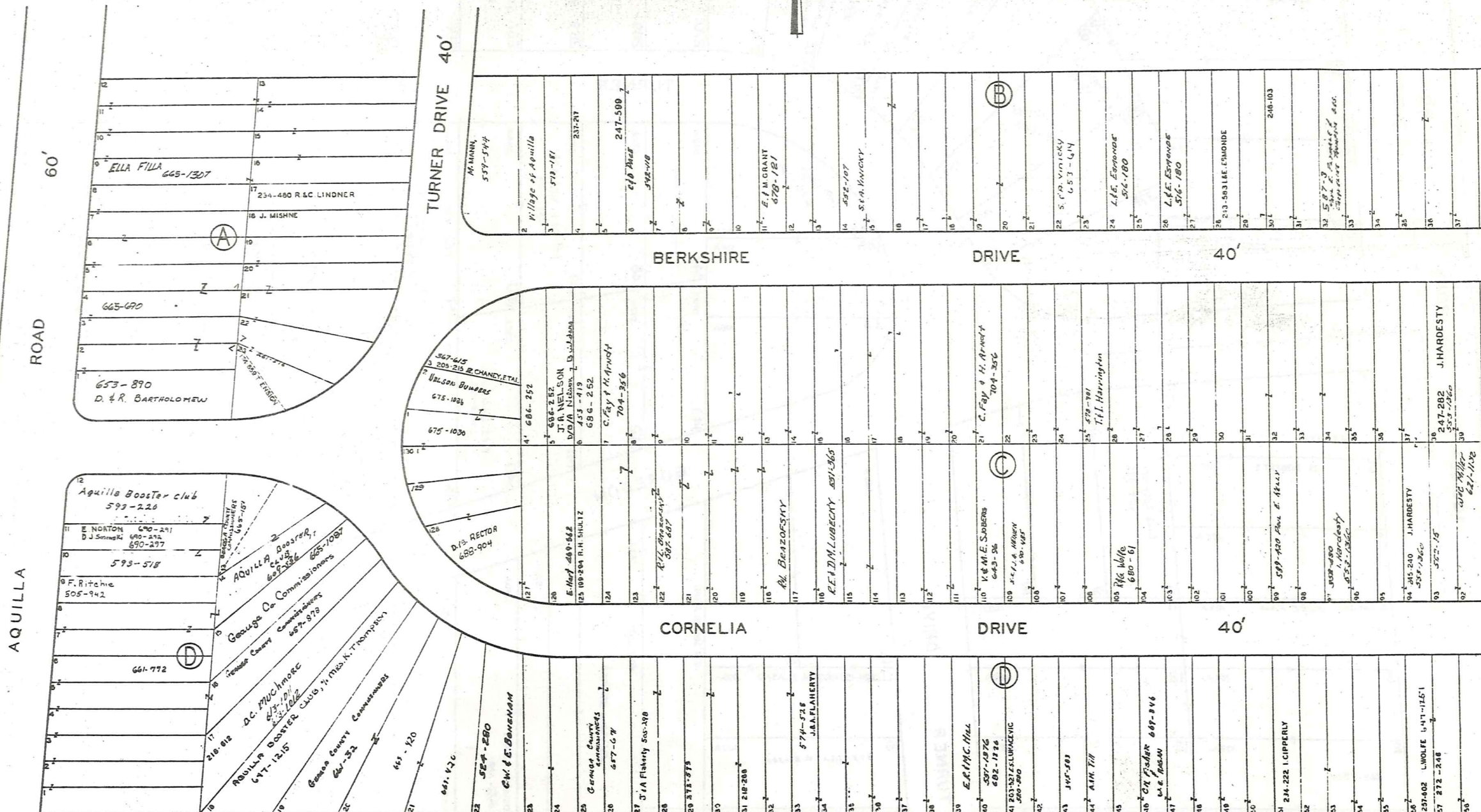
AND RESUBDIVISION OF BLOCKS I & J AND SUBLOTS
 NOS. 125 TO 141 INCLUSIVE IN BLOCK D

VOL. 2 PAGES 6, 7, 8, 9, 10, 11, 12, 19 & 33 REC. OF PLATS

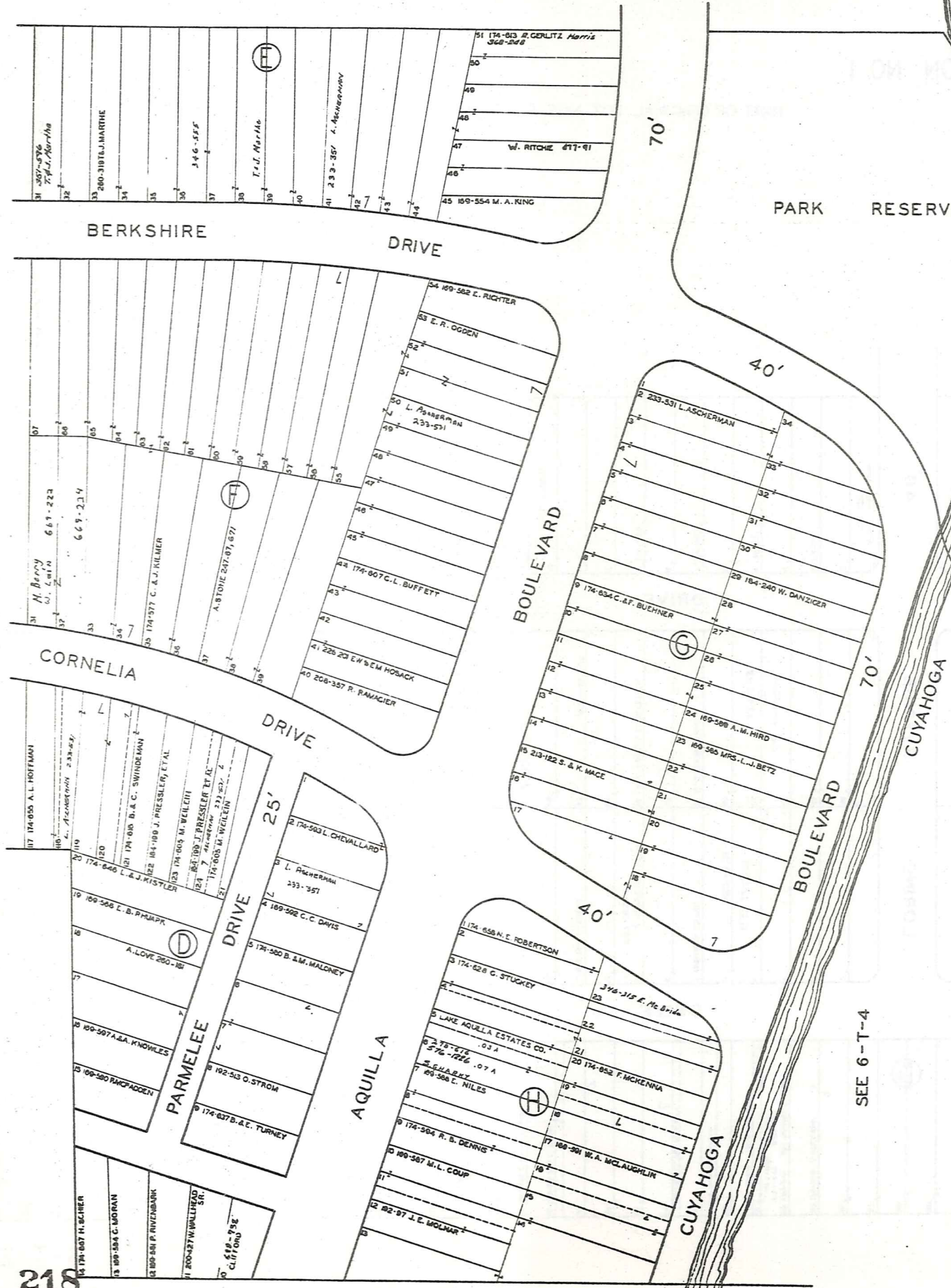
SCALE 1 INCH = 40 FEET

JAN. 1, 1983

PART OF ORIGINAL LOT NOS. 9 & 10 OF THE HOLMES TRACT CLARIDON TOWNSHIP



SEE 6-T-2



AQUILLA VILLAGE VOL. 4 PAGES 26-27 REC. OF PLATS
 FORMERLY
 LAKE AQUILLA ESTATES COMPANY'S SUBDIVISION NO. 1
 AND RESUBDIVISION OF BLOCKS I & J AND SUBLOTS
 NOS. 125 TO 141 INCLUSIVE IN BLOCK D
 PART OF ORIGINAL LOT NOS. 9 & 10 OF THE HOLMES TRACT CLARIDON TOWNSHIP
 VOL. 2 PAGES 6, 7, 8, 9, 10, 11, 12, 19 & 33 REC. OF PLATS
 SCALE 1 INCH=40 FEET JAN. 1, 1983

SEE 6-T-2

SEE 6-T-4

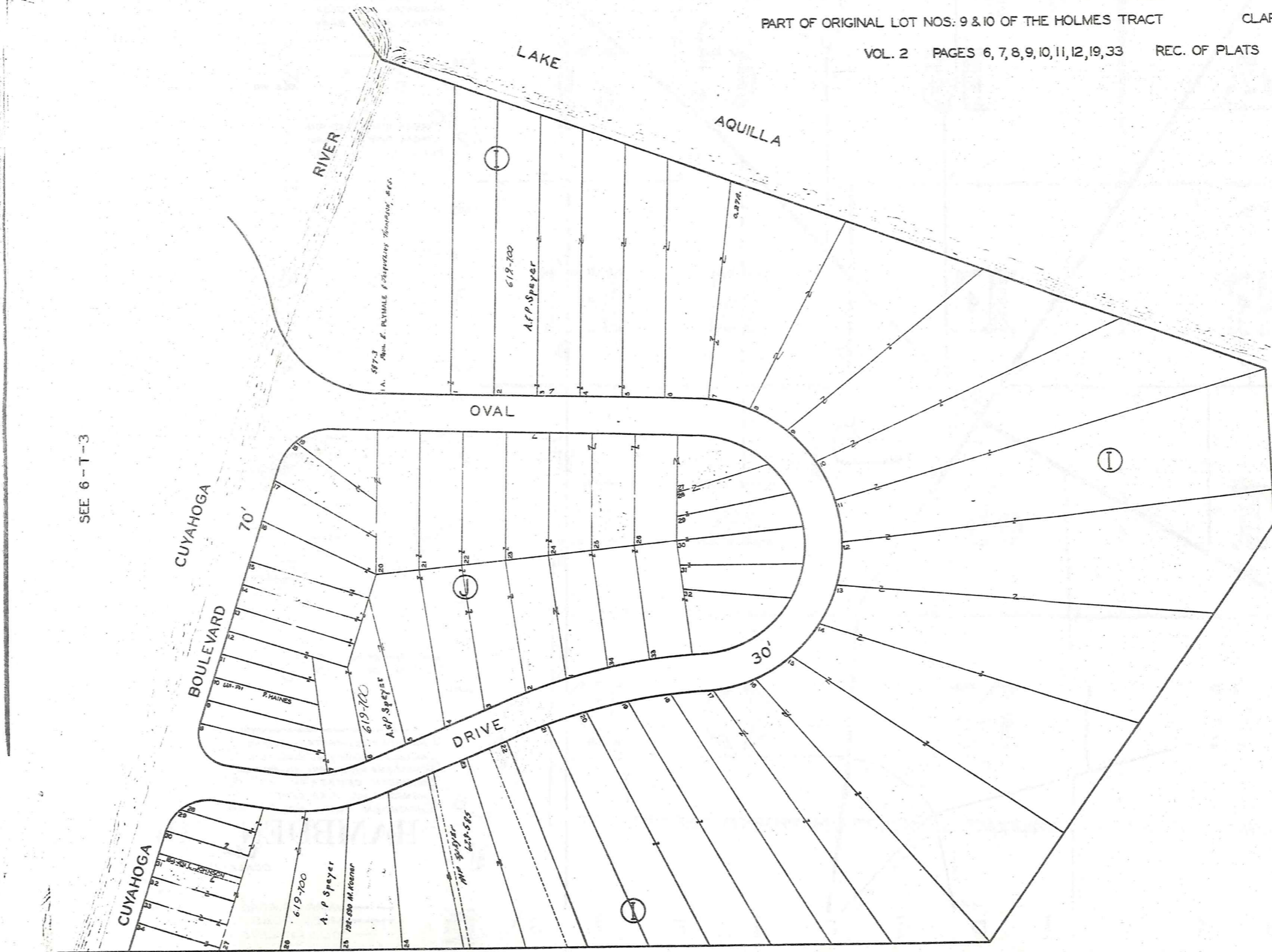
AQUILLA VILLAGE VOL. 4 PAGES 26-27 REC. OF PLATS
FORMERLY
LAKE AQUILLA ESTATES COMPANY'S SUBDIVISION NO. 1

AND RESUBDIVISION OF BLOCKS I & J AND SUBLOTS
NOS. 125 TO 141 INCLUSIVE IN BLOCK D

PART OF ORIGINAL LOT NOS. 9 & 10 OF THE HOLMES TRACT

CLARIDON TOWNSHIP

VOL. 2 PAGES 6, 7, 8, 9, 10, 11, 12, 19, 33 REC. OF PLATS

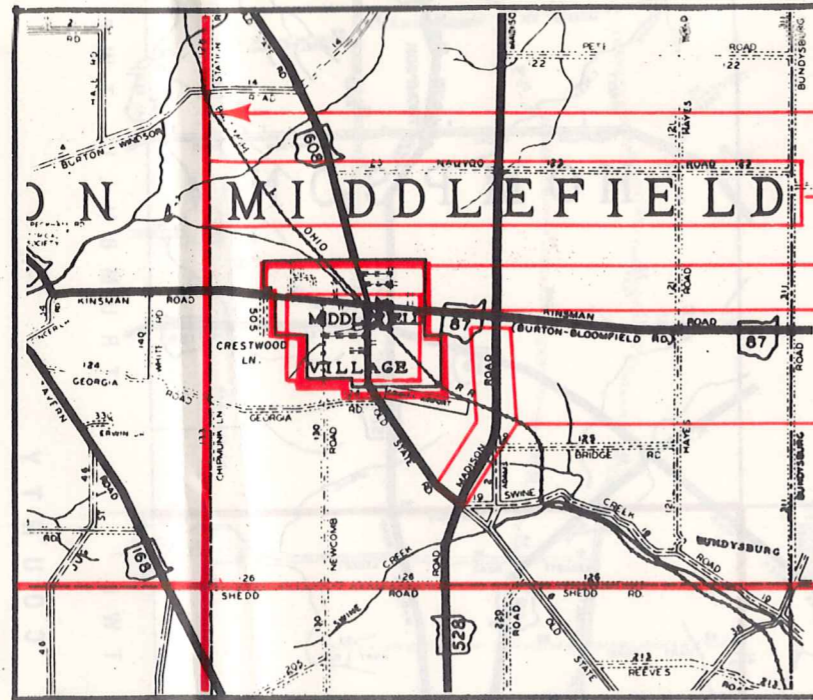


SEE 6-T-3

SCALE 1 INCH = 40 FEET
JAN. 1, 1983

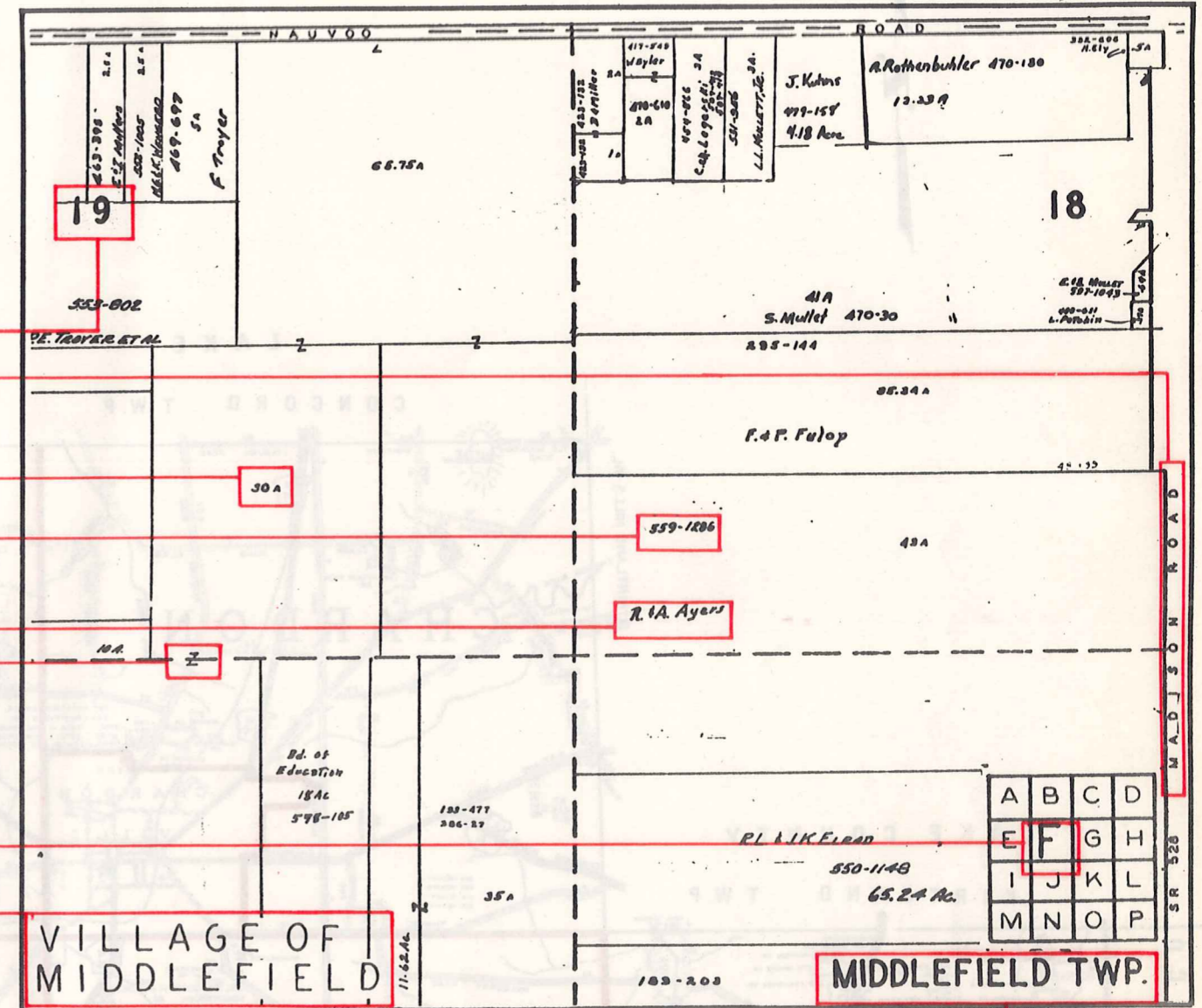
Explanation and Use Sheet for Geauga County, Ohio

SAMPLE (PARTIAL) COUNTY INDEX MAP



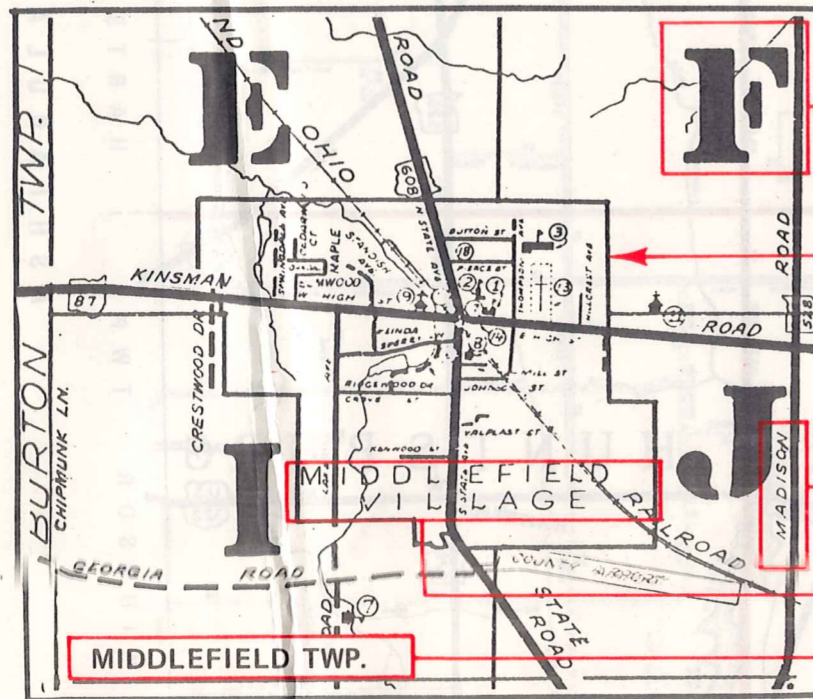
- Township Boundary
- Township Name
- Village Boundary
- Village Name
- Tract Lot Number
- Street Name
- Acreage
- Deed Book & Page
- Owners Name
- Denotes Continous Ownership

SAMPLE (PARTIAL) MAP PAGE



- Map Page Number
- Village Name
- Village Boundary
- Township Name

SAMPLE (PARTIAL) MUNICIPALITY INDEX MAP



- Street Name
- Village Name
- Township Name

USE OF THE MAP VOLUME

1. LOCATE THE GENERAL AREA OF INTEREST ON THE COUNTY INDEX MAP, ATLAS PAGE 'B', AND NOTE THE MUNICIPALITY NAME (TOWNSHIP OR VILLAGE).
2. REFER TO THE TABLE OF CONTENTS, ATLAS PAGE 'C', AND NOTE THE BEGINNING ATLAS PAGE NUMBER FOR THE MUNICIPALITY OF INTEREST.
3. TURN TO THE PAGE INDICATED. ON THIS PAGE WILL APPEAR AN INDEX MAP FOR THAT MUNICIPALITY.
4. LOCATE THE GENERAL AREA OF INTEREST AND NOTE THE MAP PAGE NUMBER. THIS MAY BE EITHER A LETTER OR A NUMBER.
5. MAP PAGES ARE IN ALPHABETICAL (OR NUMERICAL) SEQUENCE FOLLOWING THE MUNICIPALITY INDEX MAP. FOLLOW SEQUENCE TO THE MAP PAGE INDICATED.
6. LOCATE SPECIFIC PARCEL OF INTEREST AND NOTE THE DESIRED INFORMATION.

NOTE: ON SOME MAPS YOU MAY BE REFERRED TO A DETAIL SHEET SHOWING AN ENLARGEMENT OF THE AREA. THESE MAPS ARE FOUND AT THE END OF THE REGULAR MAP PAGES IN EACH MUNICIPALITY IN EITHER ALPHABETICAL OR NUMERICAL SEQUENCE.

NOTE: CHARDON VILLAGE HAS TITLE SHEETS. TO LOCATE OWNERS NAME, NOTE THE PARCEL NUMBER, REFER TO THE TITLE PAGE FOLLOWING THE MAP OF INTEREST, FOLLOW NUMERICAL SEQUENCE TO THE PARCEL NUMBER OF INTEREST AND NOTE THE DESIRED INFORMATION. IN ALL OTHER MUNICIPALITIES THE OWNERS NAME APPEARS ON THE MAP PAGE.

This book is the property of REAL ESTATE DATA, INC. and is distributed by REDI under a leasing arrangement requiring return to REDI upon termination of the lease. REDI reserves the right to reclaim this book if found in the possession of any firm or person where possession was obtained through any unauthorized source.